

Baltimore TSU 480 CS

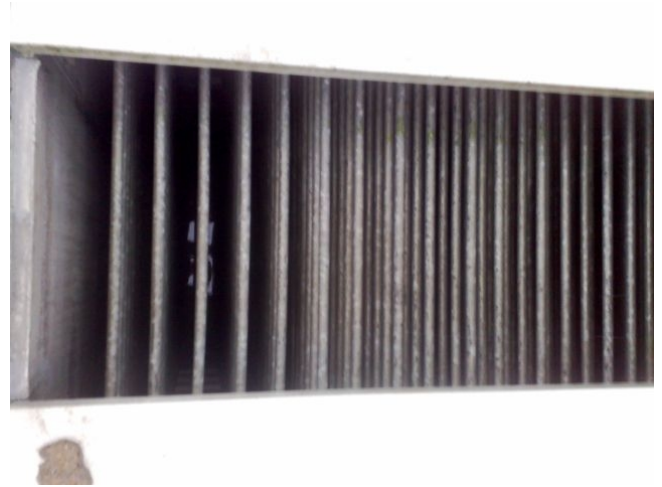
Specifications

Производитель	Baltimore
Тип	TSU 480 CS
Тип продукта	Water Cooled Chiller
кВт	1470
Мощность, тонн	434
Хладагент	NH 3 (ammonia)
Sizes	6000x3000x3000 mm (LxWxH)
Примечания	38520 l/s // ice thickness: 35 mm
Stock	1



Description

Used Baltimore TSU 480 CS



TSU - F 24

TSU

Unit Capacity & Average Temperatures for Glycol Applications

Model TSU	Nominal Capacity (kW)	Flow (m³/h)	v _p	Build Time (h) & Glycol Temperatures (°C)											
				8 h		10 h		12 h		14 h					
				In	Out	In	Out	In	Out	In	Out				
TSU-65C	325	2.4	111.0	-8.8	-4.4	-8.9	-3.4	-8.8	-2.8	-8.0	-2.4				
TSU-115C	404	2.4	130.3	-9.4	-3.8	-7.4	-2.8	-6.2	-2.4	-5.3	-2.1				
TSU-225C	492	2.8	106.7	-8.0	-4.2	-7.1	-3.2	-5.9	-2.7	-5.1	-2.3				
TSU-145C	510	2.8	117.9	-8.5	-3.7	-7.5	-2.8	-6.3	-2.4	-5.4	-2.1				
TSU-170C	567	3.8	134.4	-10.0	-3.2	-7.9	-2.4	-6.6	-2.1	-5.7	-1.8				
TSU-200C	703	5.4	71.0	-8.7	-4.4	-8.0	-3.4	-6.8	-2.9	-6.9	-2.5				
TSU-225C	781	5.4	78.8	-8.9	-4.2	-7.1	-3.2	-5.8	-2.7	-5.1	-2.3				
TSU-185C	850	4.7	111.0	-8.8	-4.4	-8.9	-3.4	-6.8	-2.8	-5.0	-2.4				
TSU-230C	858	4.7	130.3	-9.4	-3.8	-7.4	-2.9	-6.2	-2.4	-5.3	-2.1				
TSU-210C	949	8.5	83.4	-8.4	-4.8	-6.6	-3.7	-5.0	-3.1	-4.8	-2.7				
TSU-310C	1590	8.5	71.0	-8.7	-4.5	-6.8	-3.5	-5.7	-2.9	-4.9	-2.5				
TSU-260C	1330	8.5	78.8	-8.9	-4.3	-7.1	-3.3	-5.9	-2.8	-5.1	-2.4				
TSU-290C	1020	5.7	117.9	-8.5	-3.7	-7.5	-2.8	-6.3	-2.4	-5.4	-2.1				
TSU-340C	1195	5.7	134.4	-10.0	-3.2	-7.9	-2.4	-6.6	-2.1	-5.7	-1.8				
TSU-400C	1426	11.7	71.0	-8.7	-4.4	-6.6	-3.4	-5.8	-2.9	-4.9	-2.5				
TSU-490C	1592	10.7	88.8	-8.0	-4.2	-7.1	-3.2	-5.9	-2.7	-5.1	-2.3				
TSU-480C	1688	10.7	81.8	-8.2	-4.4	-7.2	-3.1	-6.1	-2.8	-5.2	-2.2				
TSU-580C	2213	15.7	102.3	-8.7	-3.4	-7.2	-2.8	-6.4	-2.2	-5.6	-1.9				
TSU-700C	2482	11.4	135.8	-10.1	-3.1	-8.0	-2.3	-6.7	-1.9	-5.8	-1.7				
TSU-800C	2813	21.5	72.4	-8.7	-4.4	-6.9	-3.4	-5.8	-2.8	-4.9	-2.5				
TSU-910C	3200	21.5	79.2	-8.9	-4.2	-7.1	-3.2	-5.9	-2.7	-5.1	-2.3				
TSU-1050C	3882	17.0	137.9	-10.1	-3.1	-8.0	-2.4	-6.7	-2.0	-5.7	-1.7				
TSU-760C	2776	27.4	73.1	-8.2	-5.0	-6.5	-3.8	-5.4	-3.2	-4.7	-2.8				
TSU-940C	3300	27.4	82.7	-8.6	-4.6	-6.7	-3.6	-5.7	-3.0	-4.8	-2.8				
TSU-1080C	3795	27.4	91.7	-8.8	-4.4	-7.0	-3.3	-5.8	-2.8	-5.0	-2.4				
TSU-1200C	4287	27.4	100.7	-9.1	-4.1	-7.2	-3.1	-6.1	-2.6	-5.2	-2.3				
TSU-1440C	5060	27.4	114.5	-9.6	-3.6	-7.6	-2.7	-6.3	-2.3	-5.4	-2.0				

Unit Capacity for Ammonia Applications

Model TSU	Purity Reciprocations Refrigerant Feed		Model TSU	Gravity Flooded Refrigerant Feed	
	Nominal Capacity kW			Nominal Capacity kW	
TSU-65C	318		TSU-400C	1322	
TSU-115C	389		TSU-450C	1476	
TSU-120C	404		TSU-480C	1698	
TSU-145C	492		TSU-680C	2073	
TSU-170C	580		TSU-700C	2256	
TSU-200C	861		TSU-800C	2863	
TSU-225C	735		TSU-910C	2962	
TSU-185C	836		TSU-1050C	3676	
TSU-230C	777		TSU-760C	2748	

Baltimore Aircoil